



Diploma in Photoshop

Part I

Making Pictures Perfect



Lesson 3

Enhancing Images with Adjustments





CAN YOU HEAR ME?

What we will discuss today:

- The Pixel
- Enhancing Images
- Tonal Adjustments
- Colour Adjustments

- Summary

- Course Interaction
- Q & A

AGENDA



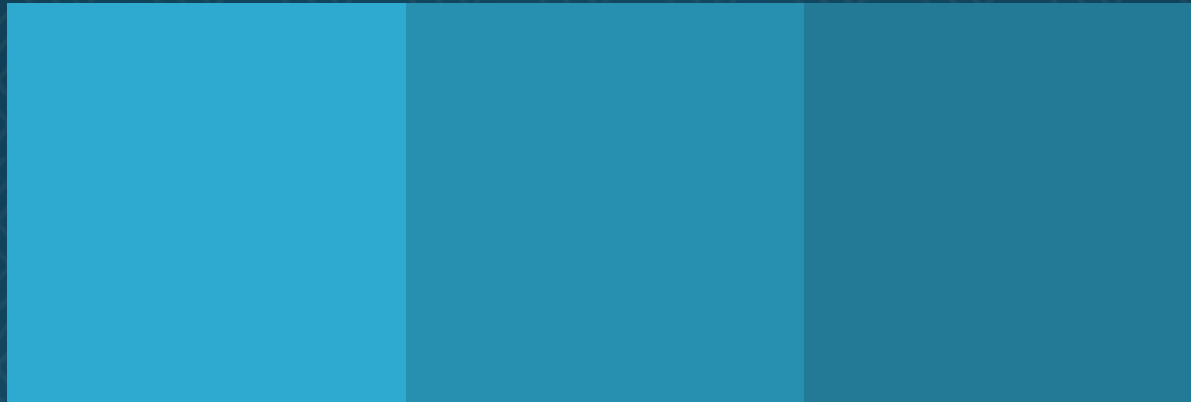
Lesson 3
Enhancing Images with Adjustments

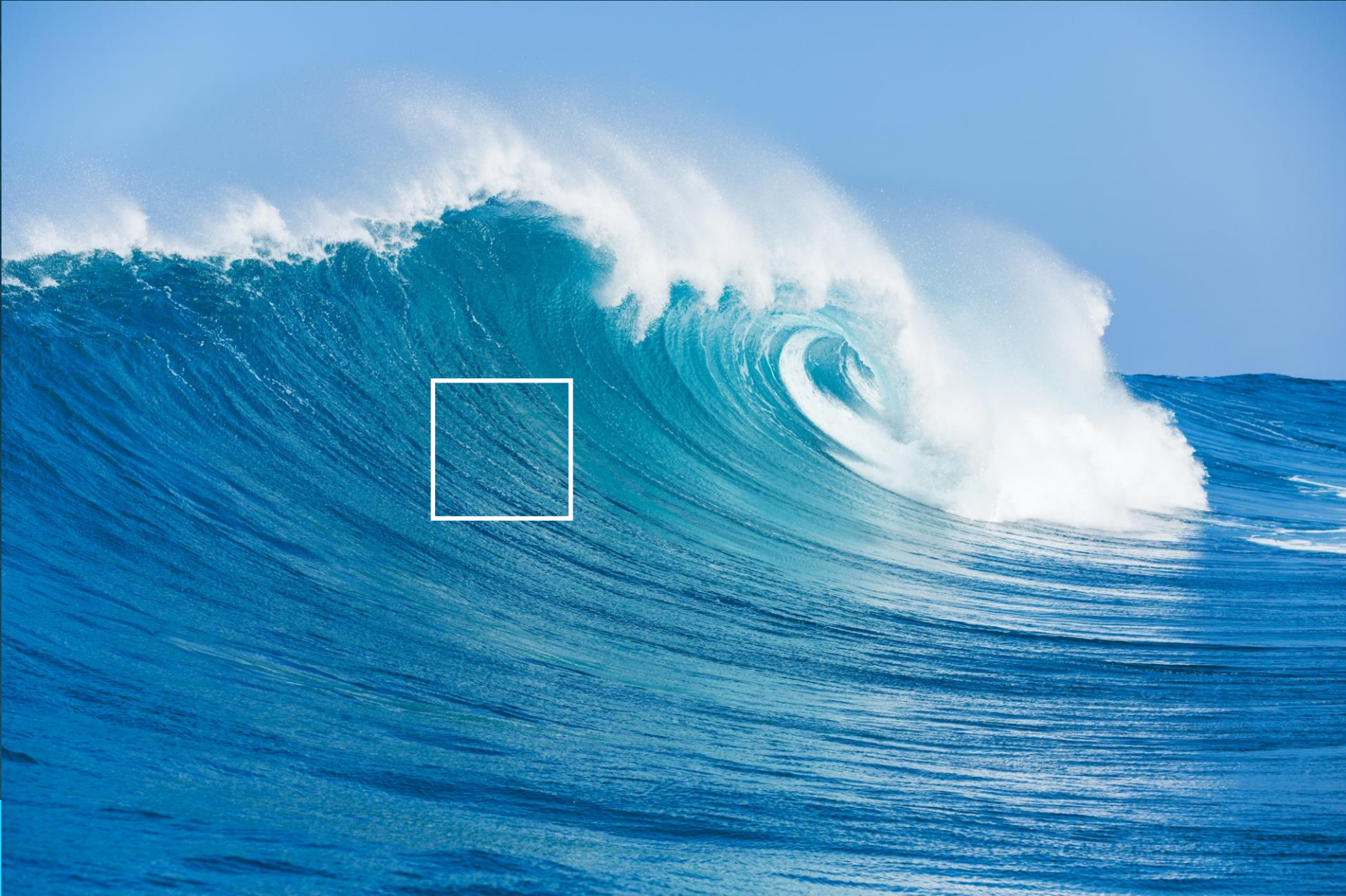


Enhance



The Pixel









Adjustments



- Adjustments are used to **ENHANCE** your images.
- Adjustments effect Tonal (Black & White) and Colour on your image.
- Adjustments can be applied destructively & non-destructively.
- Each Adjustment comes with its own sliders and options like the Toolbar.

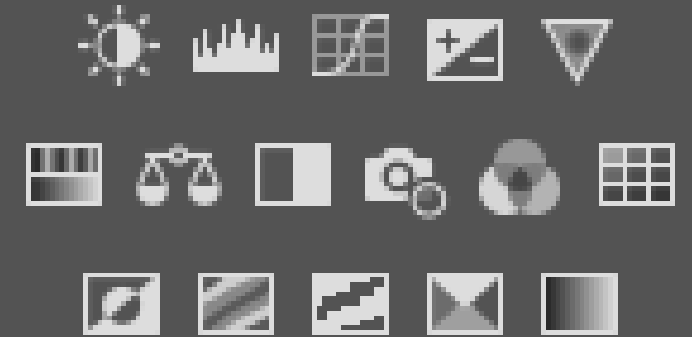
Tonal or Colour?



- Brightness & Contrast
- Levels
- Curves
- Exposure
- Vibrance
- Hue/Saturation
- Colour Balance

- Black & White
- Photo Mixer
- Channel Mixer
- Colour Lookup
- Invert
- Posterize
- Threshold

Add an adjustment



- Selective Colour
- Gradient

Adjustments



Tonal

- Brightness & Contrast
- Levels
- Curves

Exposure Colour

- Vibrance
- Hue/Saturation

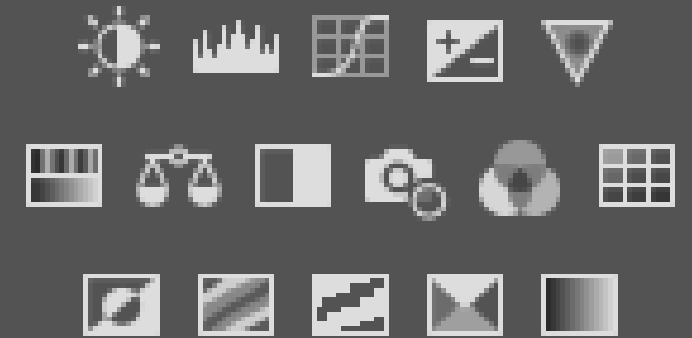
Image

- Auto

Image Adjustments

- Invert
- Posterize
- Threshold

Add an adjustment



- Selective Color
- Gradient





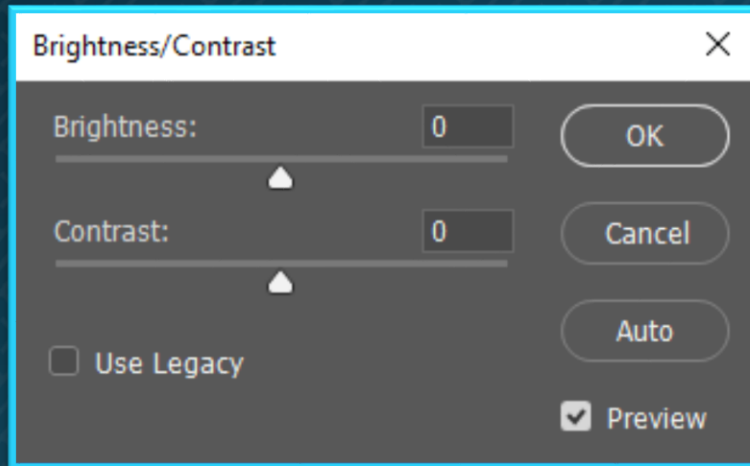
Tonal Adjustments

Tonal Adjustments

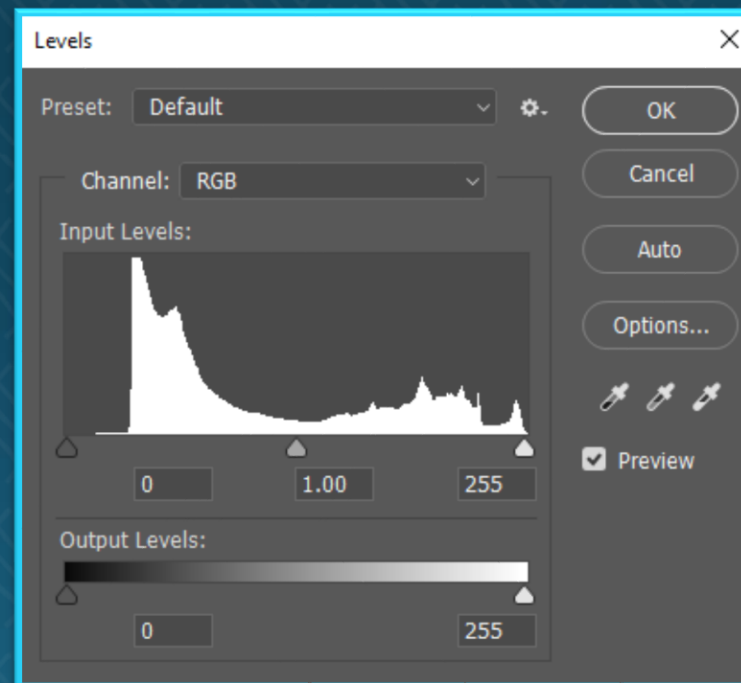


- Tonal Adjustments can be applied to any image, Black & White and Colour -

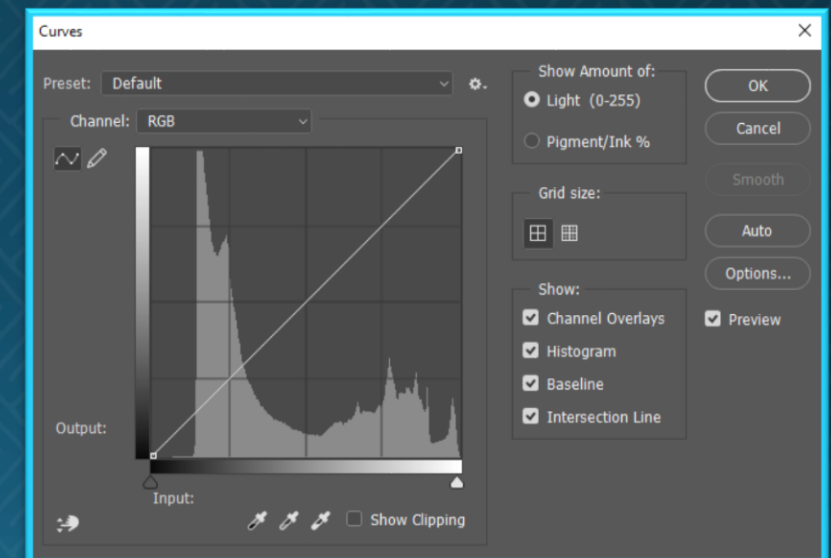
Brightness & Contrast



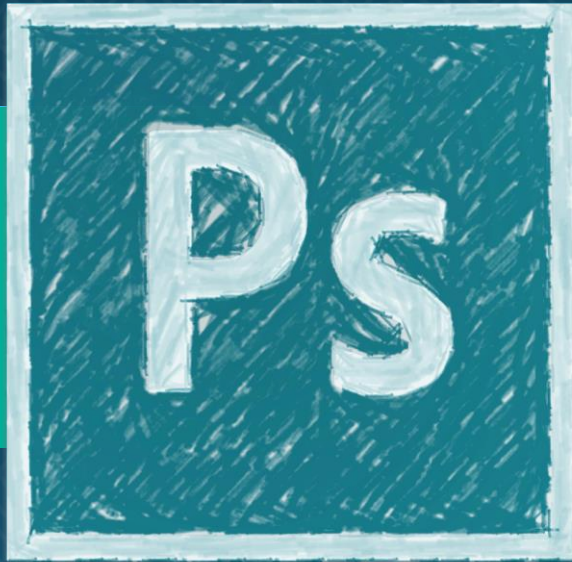
Levels



Curves







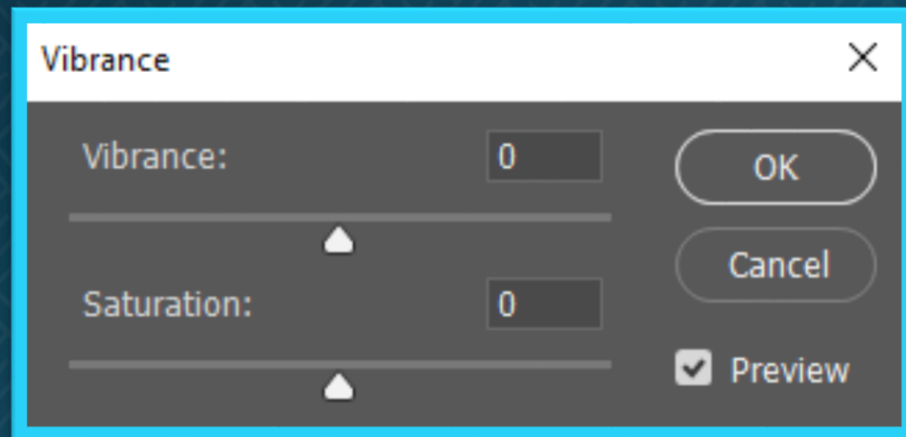
Colour Adjustments

Colour Adjustments

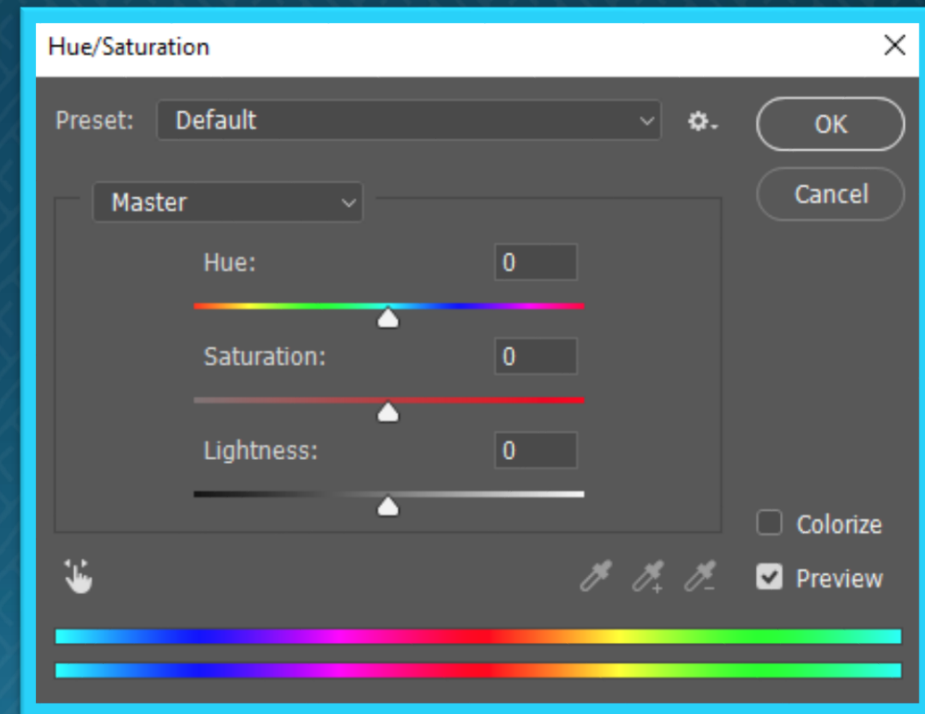


- Colour Adjustments can be applied to any image, Black & White and Colour -

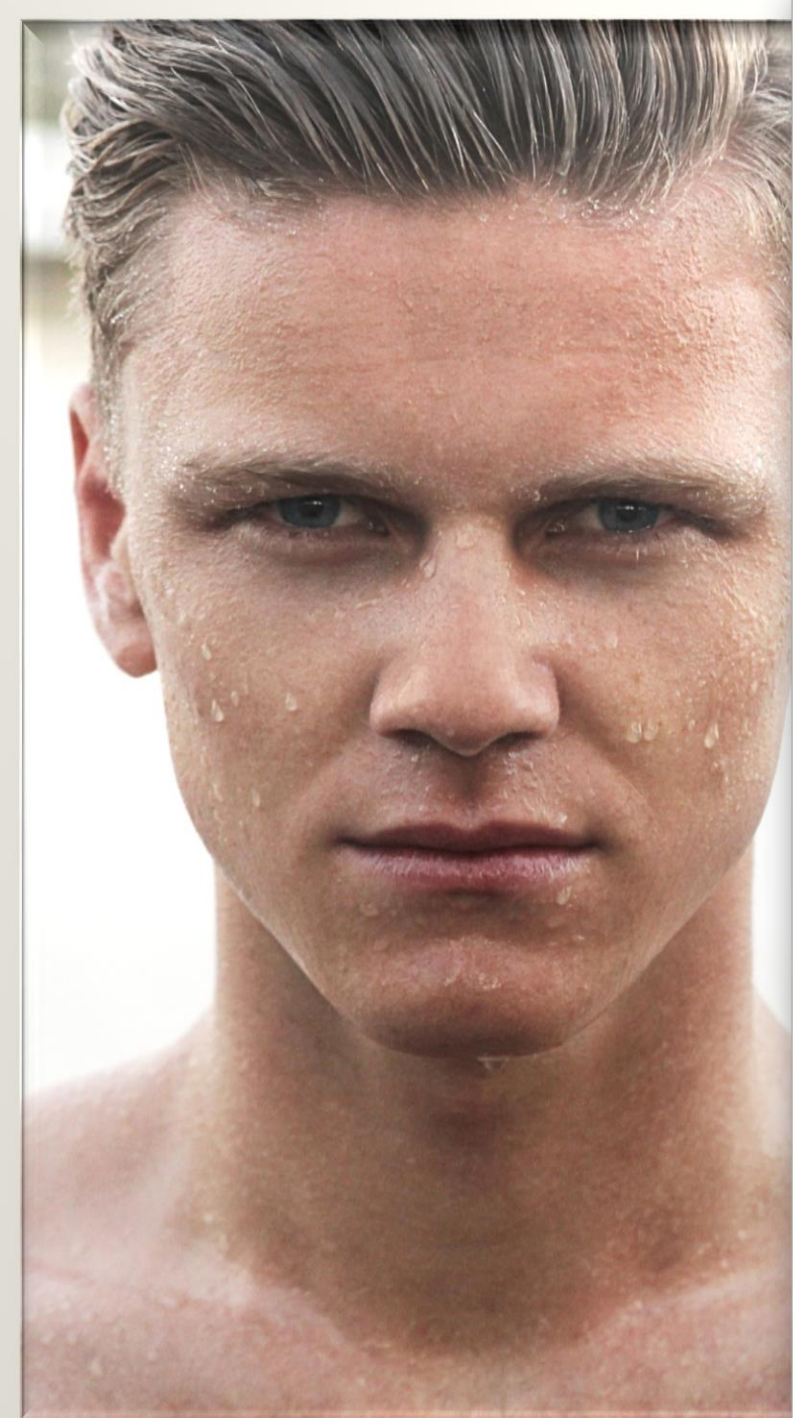
Vibrance



Hue/Saturation







ASSIGNMENTS

Assignment 2 Adjustments

Post, Like and Share an enhanced image
Make sure to look for others work and with
#shawps

Share using

#ShawPs

Just like a normal Facebook Post but use the
#ShawPs

<https://www.facebook.com/shawacademy>



